

April 2021



Welcome to the Maryland Supplemental Retirement Plans e-newsletter MSRP, eNews. eNews provides up-to-date information about the Maryland Supplemental Retirement Plans: 401(k), 457(b) and 403(b) Plans. The plans are a State-sponsored benefit (with almost 62,000 members strong) designed to help state employees save to meet their retirement goals. We also encourage you to attend our upcoming events to help improve your financial future!

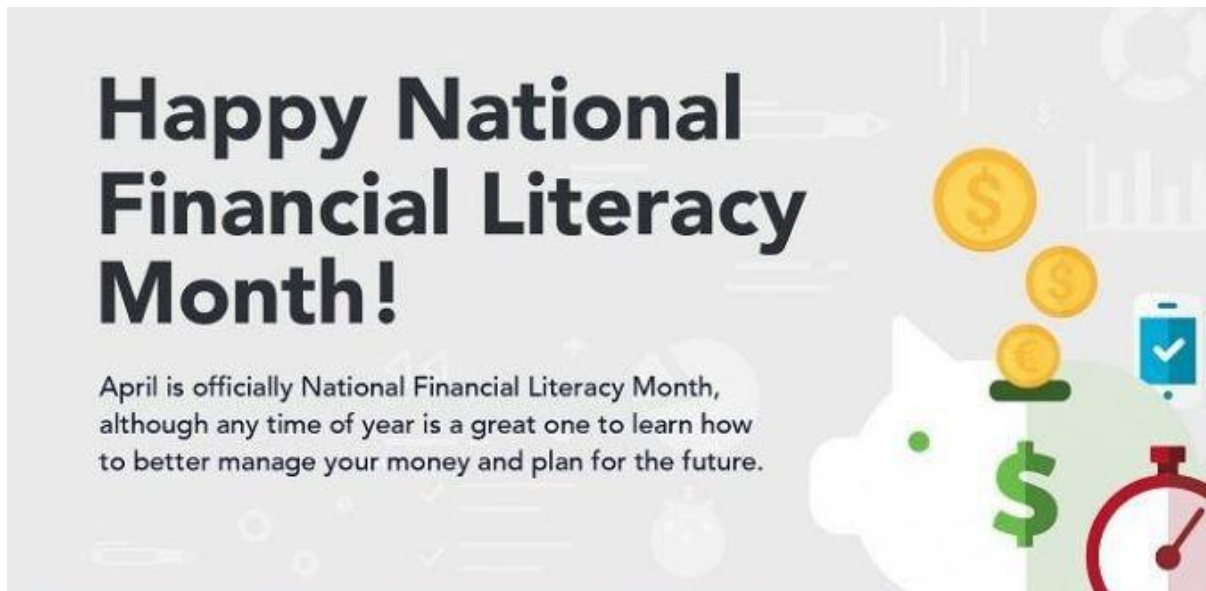
Meet the new Executive Director of MSRP

Ronda Butler Bell



Ronda Butler Bell joined MSRP as Executive Director on January 4, 2021. She recently served as Executive Director of the Maryland State Board of Examiners of Nursing Home Administrators. Ms. Bell is a magna cum laude graduate of the University of Baltimore's College of Public Affairs, where she earned a Master of Public Administration in Public Policy and Administration; she is also a magna cum laude

graduate of the University of Maryland University College, where she earned a Bachelor of Science in Law/Legal Studies with a Business Administration minor. Ms. Bell has over 29 years of administrative experience in corporate, federal, and state organizations.



Kickstart Financial Literacy Month by attending MSRP's monthly webinars!

Our 30 minute educational webinars will help you to stay up to date with changing financial conditions. We have a variety of different topics of interest to stay connected with Employees. Click below to visit MSRP's website to select a topic, date and time that's convenient for you.

Registration is easy!

Register for as many sessions as you desire. Webinars are conducted through Google Meet. Reserve your spot quickly — **Spaces are limited!**

[CLICK HERE TO REGISTER FOR OUR UPCOMING WEBINARS](#)

Here is what webinar attendees are saying.....



"This is good information that I put to use. I organized our important papers in a safe and felt so much better. The budget spreadsheet was helpful as well. As a result of webinar, I called SRA about the pension to figure out my balance and how much it would approximately cost to buy service time back.

Thanks so much, I am in the know and it feels great"

-Nicola S.

Financial education is important....Why?

Credit card debt comes with a cost. The average household with revolving credit card debt pays \$904 in interest annually. (Nerd Wallet)	A Gallup poll found only about 1/3 of Americans or (32%) maintain a household budget. (Generation Wealthy)
Sixty-four percent of Americans are now expected to retire with less than \$10,000 in their retirement accounts. (Yahoo finance)	With your retirement possibly lasting 20 years or longer , saving for it is more vital than ever. (Investopedia)

Coming Soon...our new MSRP Magazine, stay tuned!



Want to enroll in the MSRP plans or increase your current contribution amount? Want to change your investment options or update your beneficiary information?

Visit the 'How do I' on the marylanddc.com website

[CLICK HERE!](#)

Your Nationwide Representatives are also available to assist you with enrollment, account reviews and updates. To schedule a virtual meeting, click on the link below your Nationwide Representative's contact information.

Maryland Supplemental Retirement Plans

Your Nationwide Representatives

For early to mid-career employees

Your Agency Location (by county)

Your Retirement Specialist

Baltimore City and Baltimore County W. of Charles St. MSDE 200 W. Baltimore St., DPSCS Reisterstown Plaza	<u>Savannah Bellamy</u> CFP® 443-468-5038 raths5@nationwide.com Click to schedule an appointment
Baltimore City and Baltimore County E. of Charles St. Cecil and Harford	<u>Amy Lillis-Konopacki</u> CRPC®, CRPS® 410-618-8802 lillia2@nationwide.com Click to schedule an appointment
Kent, Queen Anne's, Talbot, Caroline, Dorchester, Wicomico, Somerset, Worcester	<u>Kevin Pittman</u> 301-395-2453 pittmk4@nationwide.com Click to schedule an appointment
Howard, Carroll, Frederick, Washington, Allegany, Garrett Jessup, Clifton T. Perkins	<u>Mary Campbell</u> CRC® 410-596-6003 gruppenmc@nationwide.com Click to schedule an appointment
Anne Arundel County: exceptions: MAIF, Lottery, Environment, SHA - 707 N. Calvert	<u>Glenn Pulver</u> CRC® 410-647-1465 pulverg@nationwide.com Click to schedule an appointment
Montgomery, Prince George's, Charles, Calvert, St. Mary's	<u>Keith Beasley</u> 202-941-8883 keith.beasley@nationwide.com Click to schedule an appointment

For late career employees and those within 5 years of being eligible for retirement

<i>Your Agency Location</i>	<i>Your Personal Retirement Consultants</i>
All Counties and Baltimore City	Lynne Celia CFP®, MBA 703-608-5603 lynne.celia@nationwide.com Click to schedule an appointment
	Kevin Pittman 301-395-2453 pittmk4@nationwide.com Click to schedule an appointment

